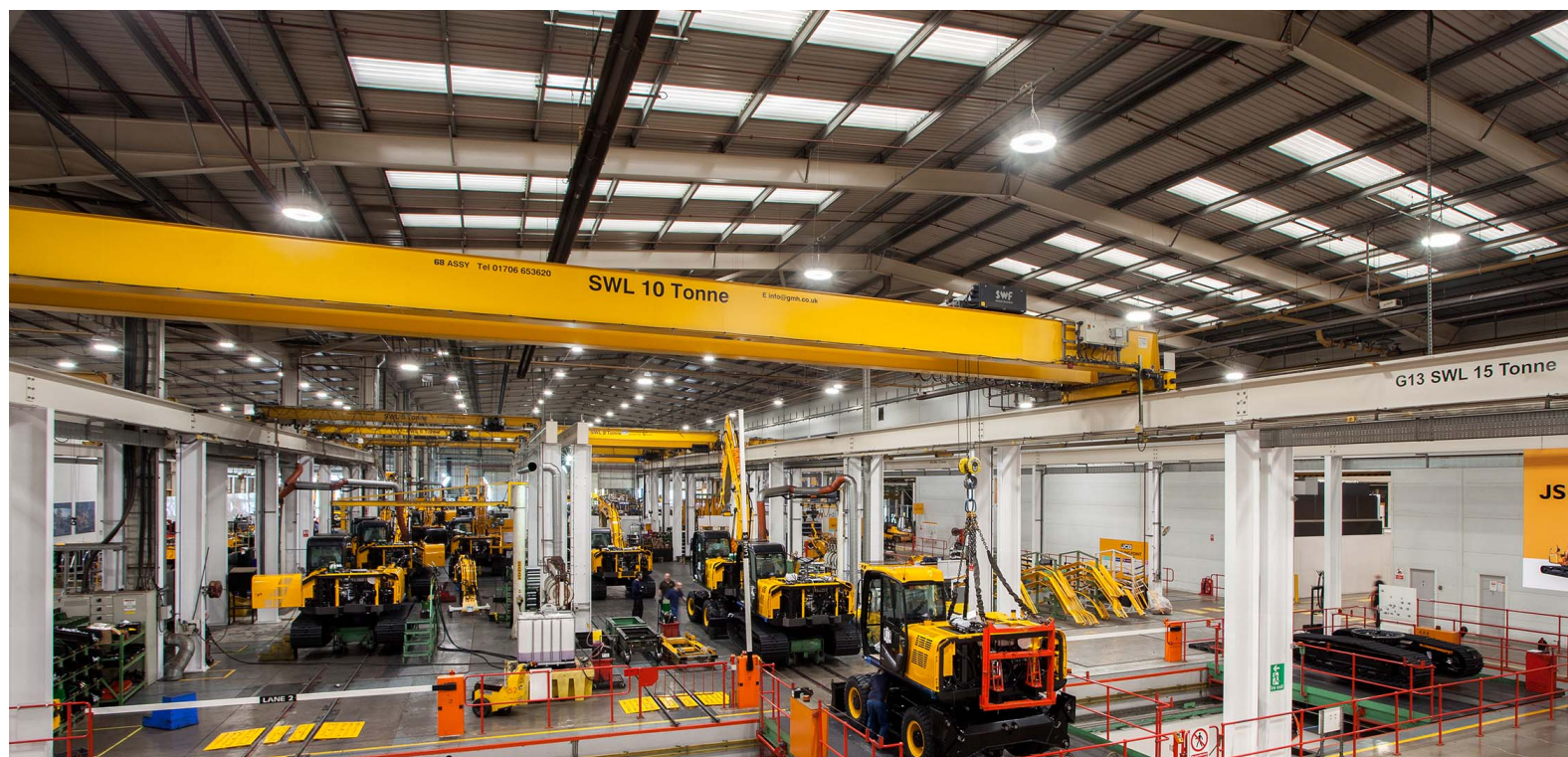




Product image may not represent the final configuration stated above.



Product Specification

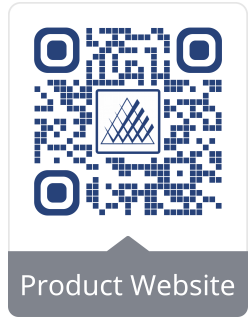


www.holophane.co.uk/ **HAL Holophane Website**

Holophane Haloprism LED high bay luminaire delivering a unique lighting halo appearance utilising PrismaLED optics. Circular ventilated chassis manufactured from high pressure die cast LM20 aluminium (AlSi12Cu) to maximise heat transfer. Patented ventilated electronic driver chamber with precision prismatic glass lenses sealed to IP65.

This specific SKU includes:

- Series 2
- LED light engine producing c.30,000 lm with a nominal 4000K colour temperature, 80CRI
- Broad Distribution (1.2:1 to 1.7:1)
- Smooth White (RAL9016)
- DALI control and monitoring (any on site controls wiring should be completed in compliance with the respective control system's installation instructions (and limitations))



Performance

Drive Current from Driver:	672mA
Power:	201.6W
Fitting Current:	0.9A
Fitting Inrush:	80A - 0.225ms
Number of Drivers:	1
1x Driver 1 Inrush:	80A - 0.225ms
Max Drivers per 16A Type B MCB:	8
Max Fittings per 16A Type B MCB:	8
Total Number of LEDs:	306
Minimum Dim Level:	1 %
Optical Risk Group:	1



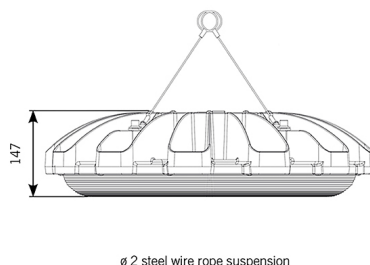
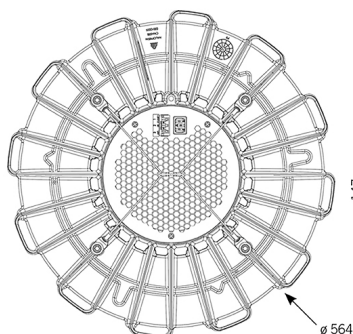
17Kg



[Installation Guide](#)

Dimensions

CIBSE TM66 - CEAM Rating

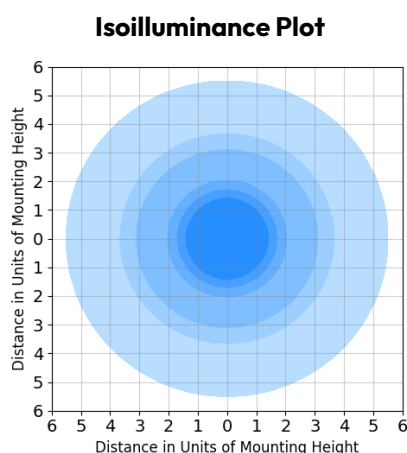
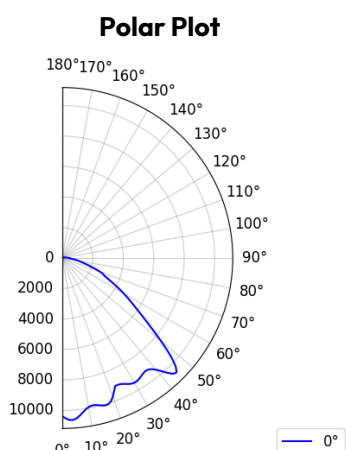


2.3*

2.5 to 4.0	1.5 to 2.5	0.5 to 1.5	0 to 0.5
Excellent circularity	Definite/ substantial progress to circularity	Some circular economy functionality	Very poor circular economy performance


*Preliminary Rating

Photometry IES File



Lumens:	33,974
CCT:	4000K
CRI:	80
IES File:	HAL.2.LM3048.BD
G-Class:	G*3 Imax @ \square 70°: 77 Imax @ \square 80°: 32 Imax @ \square 90°: 12

Colour Temperatures

► 4000K 

Colours

Selected Colour

 **C1** Smooth White (RAL9016)

Standard Colours Available

 **C1** Smooth White (RAL9016)

Lumen data is considered to be representative of the configuration shown, and may vary, with a tolerance on flux of +/- 7% (typical of LED manufacturer's data) and luminaire power of +/- 5%.

The specifications of the Holophane luminaires represents typical values. All descriptions, illustrations, drawings and specifications in the Holophane catalogue, Datasheets and website represent only general particulars of the goods to which they apply and shall not form part of any contract. The company reserves the right to change specifications at its discretion without prior notification or public announcement.